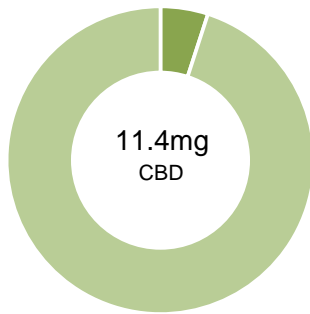


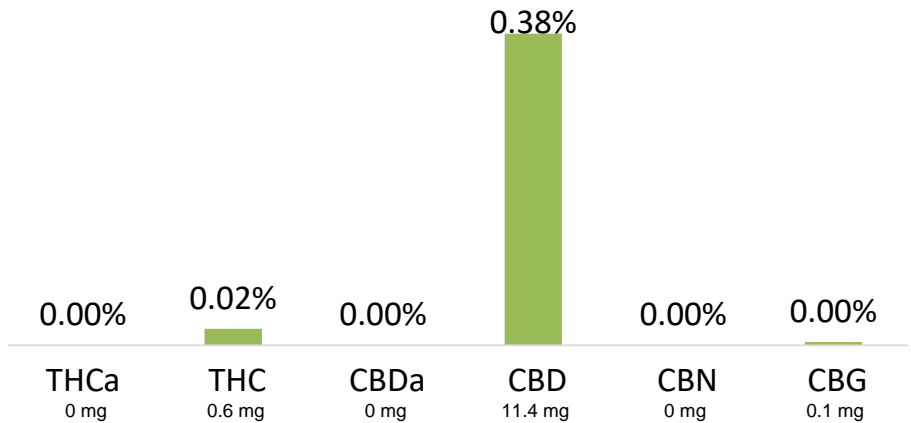
Full Spectrum

| | | | |
|------------------|------------|-----------------|-------------|
| Batch ID: | 250GB-008 | Test ID: | 9397642.035 |
| Reported: | 1-Mar-2019 | Method: | TM01 |
| Type: | Edible | | |
| Test: | Potency | | |

CANNABINOID PROFILE



- Total Potential THC 0.6mg **
- Total Potential CBD 11.4mg **



** Total Potential THC/CBD is calculated using the following formulas to take into account the loss of a carboxyl group during decarboxylation step.


Total THC = THC + (THCa * (0.877)) and Total CBD = CBD + (CBDa * (0.877))

% = % (w/w) = Percent (Weight of Analyte / Weight of Product)

NOTES:

Free from visual mold, mildew, and foreign matter.
of Servings = 1, Sample/Fill Weight = 2.99363g

FINAL APPROVAL


Greg Zimpfer
1-Mar-2019
11:57 AM


David Green
1-Mar-2019
12:11 PM

PREPARED BY / DATE

APPROVED BY / DATE

Testing results are based solely upon the sample submitted to Botanacor Services, LLC, in the condition it was received. Botanacor Services, LLC warrants that all analytical work is conducted professionally in accordance with all applicable standard laboratory practices using validated methods. Data was generated using an unbroken chain of comparison to NIST traceable Reference Standards and Certified Reference Materials. This report may not be reproduced, except in full, without the written approval of Botanacor Services, LLC. ISO/IEC 17025:2005 Accredited A2LA Certificate Number 4329.02

